



VOLUME & LASH-LINER

LASH QUEEN MYSTIC BLACKS M A S C A R A

- THE 1ST
LASH-LINER
VOLUME
MASCARA
- CHARGES
AT THE ROOTS
EVEN BETWEEN
LASHES
- DEFINES THE
LENGTHS TO
REVEAL
CONTRAST

LASH QUEEN
MYSTIC BLACKS
M A S C A R A

MAKE-UP RESULT



VOLUME
+
LASH-LINER

A UNIQUE BRUSH/ FORMULA DUO

PRECISE “DOUBLE BRUSH RITUAL”

- 1 **Half corolla bristles:**
Strong deposit at the roots in one stroke
- 2 **Comb side:**
Smaller thin bristles to separate the tip of lashes
- 3 **Tip:**
Accentuate the deposit at the corner = Create a coma

“EBONY BLACK” FORMULA

- 1 **Ebony Black pigments + Polymers = Deep intense black**
- 2 **Fixing agent = Better deposit**

PRECISE “DOUBLE BRUSH RITUAL”

=

LASH-LINER VOLUME EFFECT



① Half corolla bristles = Strong deposit of charge at the roots

② Comb side = Separate tip of lashes

③ Tip = Create a coma

EBONY BLACK FORMULA



Fixing agent



① Ebony Black pigments
+ Polymers = Deep
intense black



② Fixing agent = Better
deposit at the roots

APPLICATION

- Use the larger semi-rounded shape side to coat and charge roots + the upper inner rim.
- Brush from the root to the tip.
- Turn the brush to use the comb to separate tips and create a Lash-liner effect at the roots by contrast.
- Intensify the outer corner with the tip of the brush.

APPLICATION

- 1 Coat & charge the root of the lashes



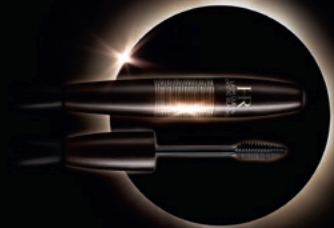
- 2 Separate and brush the top of lashes



- 3 Intensify the outer corner



**UNPRECEDENTED
JEWEL-DESIGN**





LASH QUEEN MYSTIC BLACKS M A S C A R A

MAKE-UP RESULT

- Volume + Lash-liner

MYSTIC TECHNOLOGY

- Ebony Black
Pigments +
Intensifying
Polymers = Deep
intense black
- Fixing Agent =
Better deposit of
charge at the roots

JEWEL DESIGN